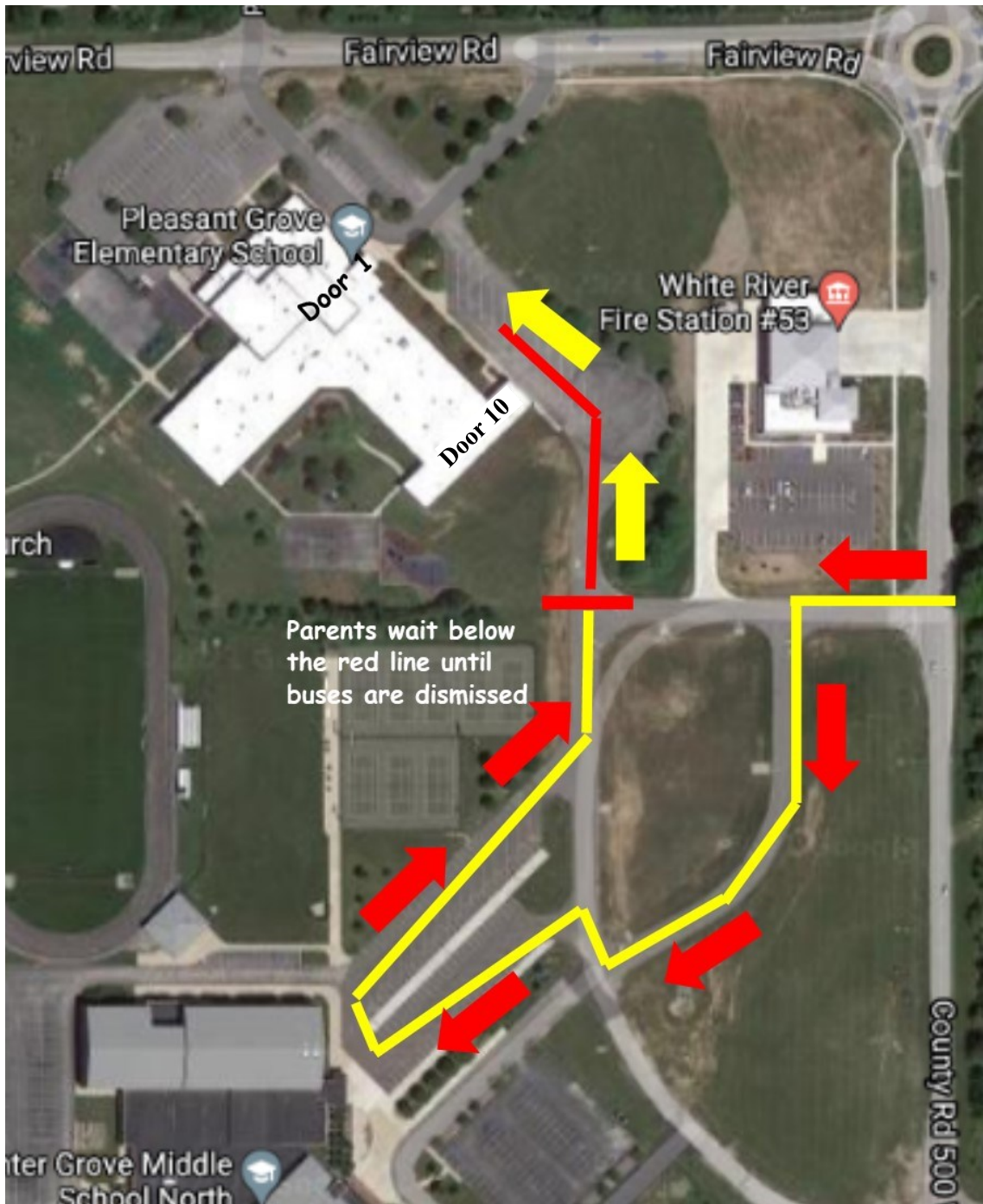


## Pleasant Grove Elementary

### Parent Drop-Off 8:55 a.m.

1. Parents will enter using the Middle School North entrance next to the Fire Station.
2. Cars will line up using the alternative Middle School North lane and drive towards PGES.
3. Cars should wait below the red line to allow buses room for dismissal.
4. Upon bus dismissal, cars will pull up to DOOR 10 (Kindergarten hallway) and students will dismiss on the driver's side of curb.
5. We will attempt to dismiss between 4-5 cars at one time.
6. Drivers will exit using the Pleasant Grove Elementary main drive.



## Pleasant Grove Elementary Parent Pick-Up 3:55 p.m.

1. Vehicles should access the Middle School North entrance next to the Fire Station.
2. Cars will line up using the alternative Middle School North lane and drive towards PGES.
3. Cars should wait below the listed red line to allow buses room for dismissal.
4. Upon bus dismissal, cars will pull up to DOOR 10 - the Kindergarten entrance.
5. Parents will display their laminated family number (car tag) on their rearview mirror of their vehicle.
6. Students will be dismissed by radio from the cafeteria to the vehicle.