


The following procedures are for the safety of our students. We truly appreciate your efforts in keeping our school safe and secure.

- Students may be dropped off NO EARLIER than 8:55 a.m. unless they participate in Honey Grove.
- Students must be in the building before the 9:00 a.m. bell, or they will be considered tardy and will need to get a tardy slip from the office before entering the classroom.
- If you choose to drop off your child, please see the map below:

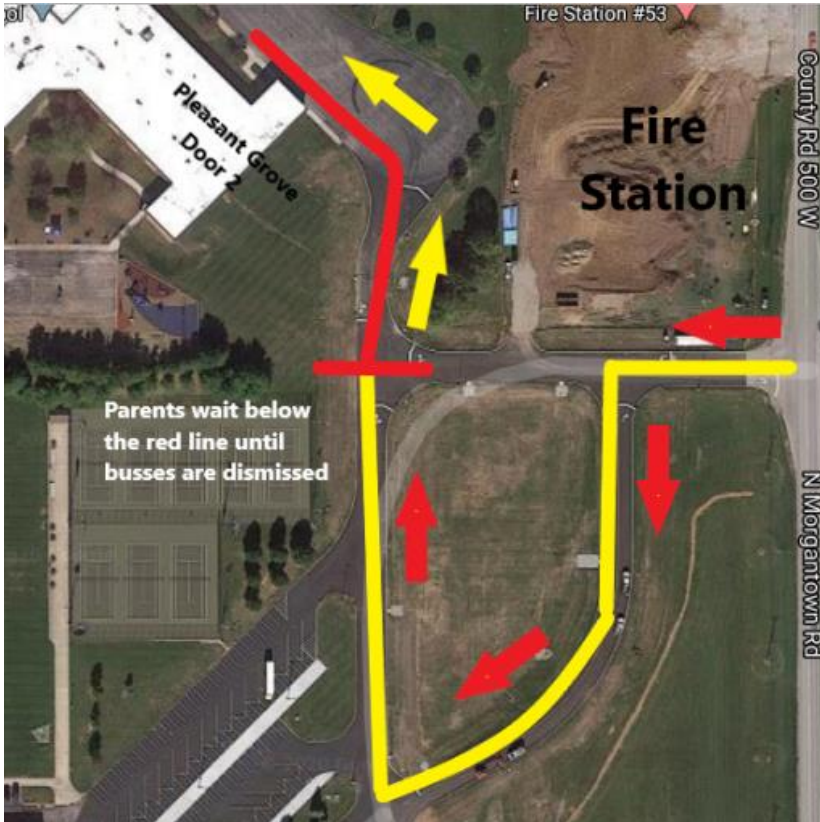


Pleasant Grove Elementary
Parent Pick-Up 3:55 p.m.

1. Vehicles should access the Middle School North entrance next to the new Fire Station.
2. Cars will line up using the alternative Middle School North lane and drive towards PGES.
3. Cars should wait below the listed red line to allow busses room for dismissal.
4. Upon bus dismissal, cars will pull up to DOOR 1 - the main entrance.
5. Parents will display their laminated family number in the windshield of the vehicle.
6. Students will be dismissed by radio from the cafeteria to the vehicle.

- Do not park in the "Reserved Parking" spots as these are for office staff who may be coming and going during school hours.
- There should be NO parking or student drop off along the curb in front of the school. This space is reserved for our student bus drop off and pick up only.

- If you plan to pick your child up from school, please be sure to use the PickUp Patrol app from your smartphone or computer and submit the information there. Dismissal is 3:45pm (3:00pm on E.R. Wednesdays)
See map below for pick instructions:



Pleasant Grove Elementary

Parent Pick-Up 3:55 p.m.

1. Vehicles should access the Middle School North entrance next to the new Fire Station.
2. Cars will line up using the alternative Middle School North lane and drive towards PGES.
3. Cars should wait below the listed red line to allow busses room for dismissal.
4. Upon bus dismissal, cars will pull up to DOOR 1 - the main entrance.
5. Parents will display their laminated family number in the windshield of the vehicle.
6. Students will be dismissed by radio from the cafeteria to the vehicle.

Early Pick Up

- If you need to pick up your child early from school, be sure to submit this information via the PickUp Patrol app. This information will need to be submitted by 2:45 p.m. (2:00 p.m. on early release Wednesdays).